

**SPECIFICATIONS :**

- MATERIALS : 6063 T-5 ALUMINUM EXTRUSIONS.
- FINISH : POLYURETHANE POWDER COATING BAKED AT 400° F. AFTER A CLEANING AND ETCHING PROCESS.
- WEATHERSTRIP : WOOL PILE AT PERIMETER.
- GLASS : 1/4" CLEAR, SOLEX OR BRONZE ANNEALED

**NOTE:**

- THIS DESIGN IS SUBJECT TO REVISIONS AND ALTERATIONS WITHOUT NOTICE.

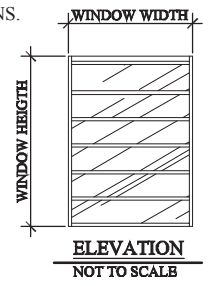


TABLE OF SIZES			
NUMBER OF BLADES	HEIGHT OF WINDOWS	NUMBER OF BLADES	HEIGHT OF WINDOWS
3	21 5/8"	10	67 7/8"
4	28 1/4"	11	74 1/2"
5	34 7/8"	12	81"
6	41 1/2"	13	87 5/8"
7	48"	14	94 1/4"
8	54 5/8"	15	100 7/8"
9	61 1/4"		
STANDARD WIDTH		24", 30", 36"	

est.1964  
 P.O. Box 651 Harbour Industrial Park, Bridgetown, Barbados  
 TEL. (246) 436 6863, www.oranltd.com, info@oranltd.com

PRODUCT NAME	
<b>ALUMINUM AND GLASS 6" SECURITY LOUVRE</b>	
	SCALE : 3/8" = 1"